

2020 self-evaluation reports have been calculated using the teacher assessments provided by schools as part of the FFT Results Service. [?](#)

College Town Primary School

2020

KS2

Overview

KS2 Attainment 2020 · Actual results

45 pupils

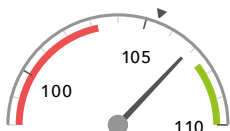
Average Scaled Score (Re, Ma)

% Expected standard+ (Re, Wr, Ma)

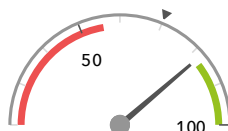
DFE

106.9 ↑

82% ↑



In line with the national average (105.4) ◀



In line with the national average (70%) ◀

KS2 Progress 2020 · Value Added

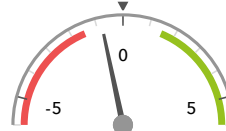
44 matched pupils

Average Scaled Score (Re, Ma)

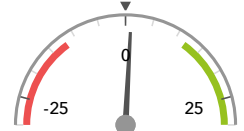
% Expected standard+ (Re, Wr, Ma)

-0.8 ↑

+1%



In line with the national average (0) ◀



In line with the national average (0%) ◀

KS2 higher and lower performing pupil groups 2020

Minimum group size: 5

| | Higher performing | Lower performing |
|--|--|--|
| Overall achievement pupil progress | Lower attainers (6) First language not English (5) Male (19) ↑ | FSM (ever) (7) FSM (5) FSM (in last 6 years) (6) |
| KS2 reading achievement pupil progress | First language not English (5) Lower attainers (6) Higher attainers (12) ↑ | FSM (5) FSM (ever) (7) FSM (in last 6 years) (6) |
| KS2 writing achievement pupil progress | Higher attainers (12) ↑ | FSM (ever) (7) FSM (5) SEN Support (10) |
| KS2 mathematics achievement pupil progress | Male (19) ↑ Lower attainers (6) First language not English (5) | FSM (ever) (7) FSM (5) SEN Support (10) |