

2020 self-evaluation reports have been calculated using the teacher assessments provided by schools as part of the FFT Results Service. [?](#)

College Town Primary School

2020

KS1

Overview

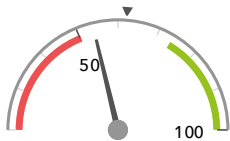
KS1 Attainment 2020 · Actual results

69 pupils

% Expected Standard + (Re, Wr, Ma)

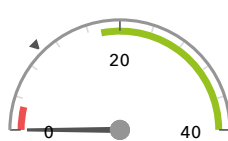
% Higher Standard (Re, Wr, Ma)

54%



In line with the national average (62%) ◀

0% -



Significantly below the national average (10%) ◀

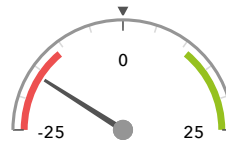
KS1 Progress 2020 · Value Added

64 matched pupils

% Expected Standard + (Re, Wr, Ma)

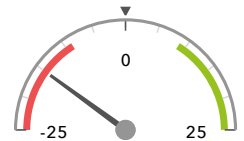
% Higher Standard (Re, Wr, Ma)

-16% -



Significantly below the national average (0%) ◀

-15% -



Significantly below the national average (0%) ◀

KS1 higher and lower performing pupil groups 2020

Minimum group size: 5

	Higher performing	Lower performing
Overall achievement pupil progress	Lower attainers (12) ↑	Higher attainers (26) - ↓ Autumn Term (24) - ↓ White (50) - ↓
KS1 reading achievement pupil progress	Lower attainers (12)	Higher attainers (26) Autumn Term (24) Male (31)
KS1 writing achievement pupil progress	Lower attainers (12) SEN Support (6)	Higher attainers (26) Autumn Term (24) First language English (52)
KS1 mathematics achievement pupil progress		Higher attainers (26) Spring Term (19) Autumn Term (24)