

# Self-evaluation Summary Dashboard

Produce custom dashboards  
at [fftaspire.org](https://fftaspire.org)

## College Town Primary School

LA Bracknell Forest DfE 8672087 Produced September 2020

### Reports

- Overview
- Attainment & Progress
- Pupil groups
- Subjects
- Disadvantaged pupils
- Scatterplot
- Context

### What it tells you

- What are the strengths and weaknesses of your school?
- How does attainment and pupil progress at your school compare to the national average?
- How are you performing in different subjects?
- Do you have any under-performing groups of pupils?

### About the data shown



#### Filters

No filters chosen (all pupils included)

You can use filters to view a subset of pupils



#### Indicators

% Expected standard+ (Re, Wr, Ma)

Average Scaled Score (Re, Ma)

2020 self-evaluation reports have been calculated using the teacher assessments provided by schools as part of the FFT Results Service. ?

College Town Primary School

2020 KS2

## Overview

### KS2 Attainment 2020 · Actual results

45 pupils

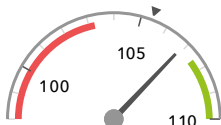
Average Scaled Score (Re, Ma)

% Expected standard+ (Re, Wr, Ma)

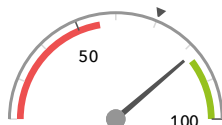
DFE

106.9 ↑

82% ↑



In line with the national average (105.4) ◀



In line with the national average (70%) ◀

### KS2 Progress 2020 · Value Added

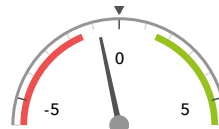
44 matched pupils

Average Scaled Score (Re, Ma)

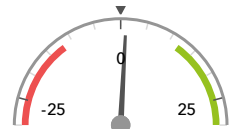
% Expected standard+ (Re, Wr, Ma)

-0.8 ↑

+1%



In line with the national average (0) ◀



In line with the national average (0%) ◀

### KS2 higher and lower performing pupil groups 2020

Minimum group size: 5

	Higher performing	Lower performing
<b>Overall achievement</b> pupil progress	Lower attainers (6) First language not English (5) Male (19) ↑	FSM (ever) (7) FSM (5) FSM (in last 6 years) (6)
<b>KS2 reading achievement</b> pupil progress	First language not English (5) Lower attainers (6) Higher attainers (12) ↑	FSM (5) FSM (ever) (7) FSM (in last 6 years) (6)
<b>KS2 writing achievement</b> pupil progress	Higher attainers (12) ↑	FSM (ever) (7) FSM (5) SEN Support (10)
<b>KS2 mathematics achievement</b> pupil progress	Male (19) ↑ Lower attainers (6) First language not English (5)	FSM (ever) (7) FSM (5) SEN Support (10)

2020 self-evaluation reports have been calculated using the teacher assessments provided by schools as part of the FFT Results Service. ?

College Town Primary School

2020 KS2

## Attainment & progress

### KS2 Attainment 2020

45 pupils

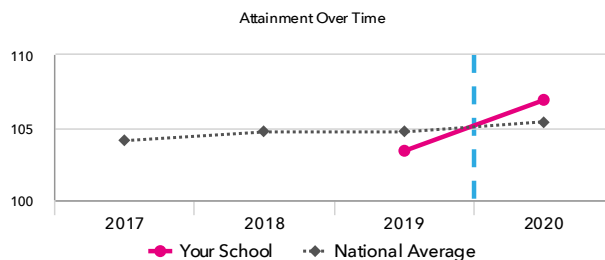
Average Scaled Score (Re, Ma)

106.9 ↑

FFT Rank



In line with the national average (105.4)



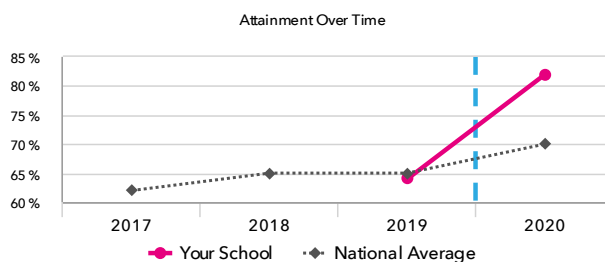
% Expected standard+ (Re, Wr, Ma) DfE

82% ↑

FFT Rank



In line with the national average (70%)



### KS2 Progress 2020

44 matched pupils

Average Scaled Score (Re, Ma)

-0.8 ↑

FFT Rank



In line with the national average (0)

% Expected standard+ (Re, Wr, Ma)

+1%

FFT Rank



In line with the national average (0%)

### KS2 performance summary

	Actual results			Pupil progress		
	2018	2019	2020	2018	2019	2020
Number of Pupils / % Matched	-	55	45	-	93%	98%
% Expected standard+ (Re, Wr, Ma)	-	64%	82% ↑	-	-8%	+1%
% Higher standard (Re, Wr, Ma)	-	0% -	22%	-	-12% -	-2%
Average Scaled Score (Re, GPS, Ma)	-	103.9	107.3 ↑	-	-2.4 -	-0.8 ↑
Average Scaled Score (Re, Ma)	-	103.4	106.9 ↑	-	-2.5 -	-0.8 ↑
% Expected standard+ Reading	-	73%	89% ↑	-	-7%	+0%
% Higher standard Reading	-	16%	36% ↑	-	-16% -	-10%
Scaled Score Reading	-	103.7	107.0 ↑	-	-2.0 -	-0.9
% Expected standard+ Writing	-	76%	84%	-	-9%	-2%
% Higher standard Writing	-	2% -	22%	-	-21% -	-10%
Scaled Score Writing	-	99.6	106.8 ↑	-	-3.5 -	-1.1 ↑
% Expected standard+ Maths	-	80%	89%	-	-4%	+2%
% Higher standard Maths	-	9% -	31% ↑	-	-18% -	-7%
Scaled Score Maths	-	103.0 -	106.7 ↑	-	-3.0 -	-0.7 ↑
% Expected standard+ Grammar, Punctuation & Spelling	-	82%	91%	-	-2%	+3%
% Higher standard Grammar, Punctuation & Spelling	-	36%	29%	-	-8%	-15% -
Scaled Score Grammar, Punctuation & Spelling	-	105.9	108.6	-	-1.6	-1.0
% Expected standard+ Science	-	82%	-	-	-	-

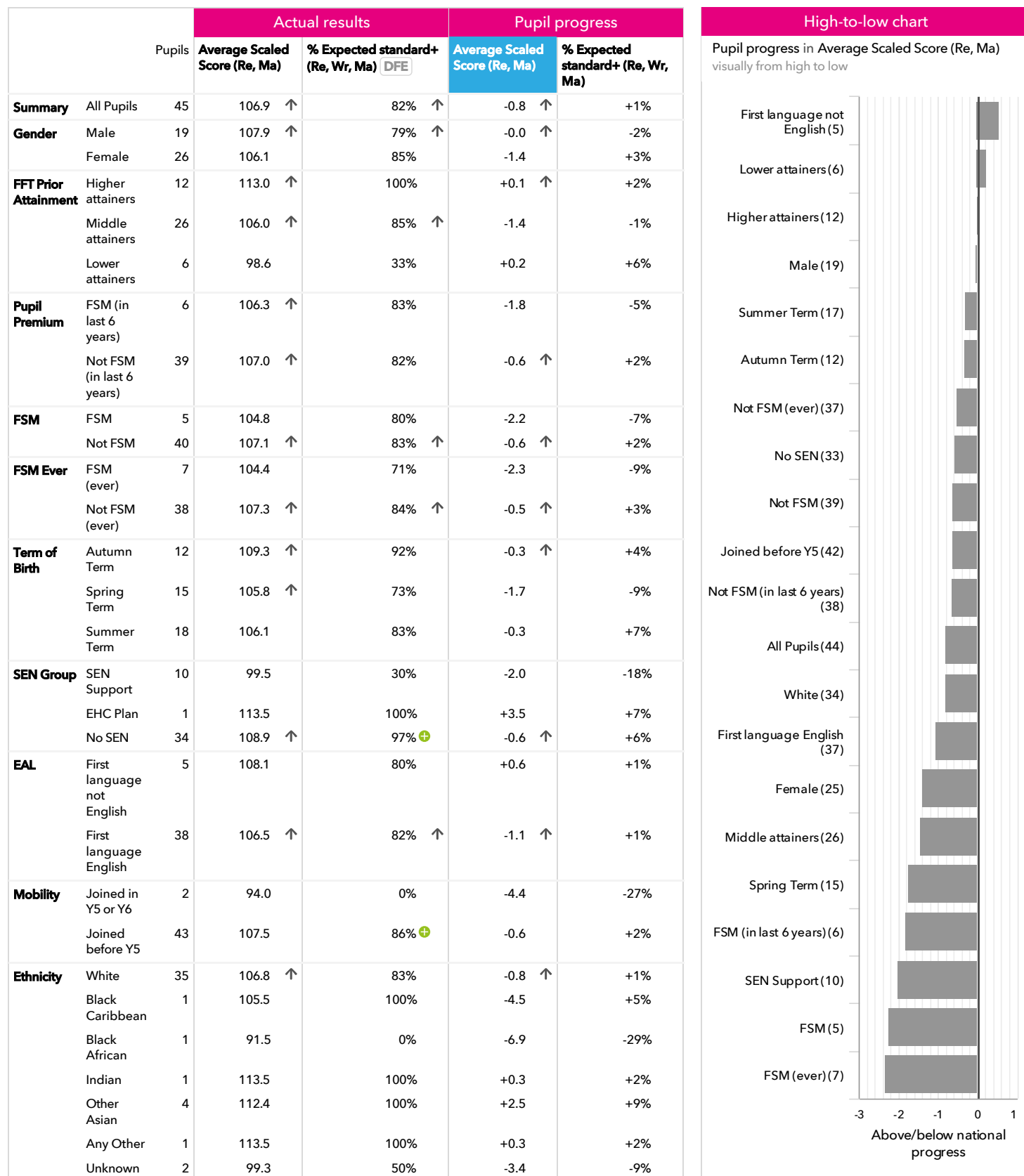
2020 self-evaluation reports have been calculated using the teacher assessments provided by schools as part of the FFT Results Service. ?

## College Town Primary School

2020 KS2

# Pupil groups

## KS2 Pupil groups performance 2020



2020 self-evaluation reports have been calculated using the teacher assessments provided by schools as part of the FFT Results Service. ?

College Town Primary School

2020 KS2

# Subjects

## KS2 subject performance 2020

	Actual results			Pupil progress			Actual results over time													
	2018	2019	2020	2018	2019	2020														
Number of Pupils / % Matched	-	55	45	-	93%	98%														
<b>Reading</b>																				
% Expected standard+	-	73%	89%	↑	-	-7%	+0%	<div><div>% Expected standard+ Reading</div><table><thead><tr><th>Year</th><th>Your School</th><th>National Average</th></tr></thead><tbody><tr><td>2018</td><td>-</td><td>75%</td></tr><tr><td>2019</td><td>73%</td><td>75%</td></tr><tr><td>2020</td><td>89%</td><td>79%</td></tr></tbody></table></div>	Year	Your School	National Average	2018	-	75%	2019	73%	75%	2020	89%	79%
Year	Your School	National Average																		
2018	-	75%																		
2019	73%	75%																		
2020	89%	79%																		
% Higher standard	-	16%	36%	↑	-	-16%	-10%													
Scaled Score	-	104	107	↑	-	-2.0	-0.9													
<b>Writing</b>																				
% Expected standard+	-	76%	84%		-	-9%	-2%	<div><div>% Expected standard+ Writing</div><table><thead><tr><th>Year</th><th>Your School</th><th>National Average</th></tr></thead><tbody><tr><td>2018</td><td>-</td><td>78%</td></tr><tr><td>2019</td><td>76%</td><td>79%</td></tr><tr><td>2020</td><td>84%</td><td>76%</td></tr></tbody></table></div>	Year	Your School	National Average	2018	-	78%	2019	76%	79%	2020	84%	76%
Year	Your School	National Average																		
2018	-	78%																		
2019	76%	79%																		
2020	84%	76%																		
% Higher standard	-	2%	22%		-	-21%	-10%													
Scaled Score	-	100	107	↑	-	-3.5	-1.1	↑												
<b>Maths</b>																				
% Expected standard+	-	80%	89%		-	-4%	+2%	<div><div>% Expected standard+ Maths</div><table><thead><tr><th>Year</th><th>Your School</th><th>National Average</th></tr></thead><tbody><tr><td>2018</td><td>-</td><td>75%</td></tr><tr><td>2019</td><td>80%</td><td>79%</td></tr><tr><td>2020</td><td>89%</td><td>78%</td></tr></tbody></table></div>	Year	Your School	National Average	2018	-	75%	2019	80%	79%	2020	89%	78%
Year	Your School	National Average																		
2018	-	75%																		
2019	80%	79%																		
2020	89%	78%																		
% Higher standard	-	9%	31%	↑	-	-18%	-7%													
Scaled Score	-	103	107	↑	-	-3.0	-0.7	↑												
<b>Grammar, Punctuation &amp; Spelling</b>																				
% Expected standard+	-	82%	91%		-	-2%	+3%	<div><div>% Expected standard+ Grammar, Punctuation &amp; Spelling</div><table><thead><tr><th>Year</th><th>Your School</th><th>National Average</th></tr></thead><tbody><tr><td>2018</td><td>-</td><td>78%</td></tr><tr><td>2019</td><td>82%</td><td>78%</td></tr><tr><td>2020</td><td>91%</td><td>79%</td></tr></tbody></table></div>	Year	Your School	National Average	2018	-	78%	2019	82%	78%	2020	91%	79%
Year	Your School	National Average																		
2018	-	78%																		
2019	82%	78%																		
2020	91%	79%																		
% Higher standard	-	36%	29%		-	-8%	-15%													
Scaled Score	-	106	109		-	-1.6	-1.0													
<b>Science</b>																				
% Expected standard+	-	82%	-		-	-	-	<div><div>% Expected standard+ Science</div><table><thead><tr><th>Year</th><th>Your School</th><th>National Average</th></tr></thead><tbody><tr><td>2018</td><td>-</td><td>82%</td></tr><tr><td>2019</td><td>82%</td><td>83%</td></tr><tr><td>2020</td><td>-</td><td>-</td></tr></tbody></table></div>	Year	Your School	National Average	2018	-	82%	2019	82%	83%	2020	-	-
Year	Your School	National Average																		
2018	-	82%																		
2019	82%	83%																		
2020	-	-																		

2020 self-evaluation reports have been calculated using the teacher assessments provided by schools as part of the FFT Results Service. ?

## College Town Primary School

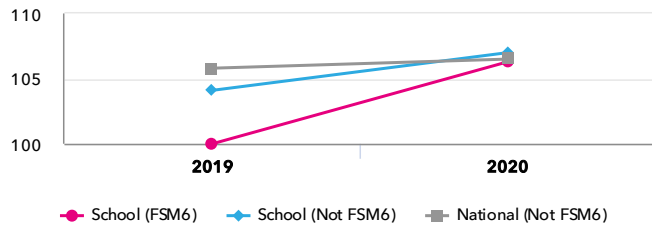
2020

KS2

# Disadvantaged pupils

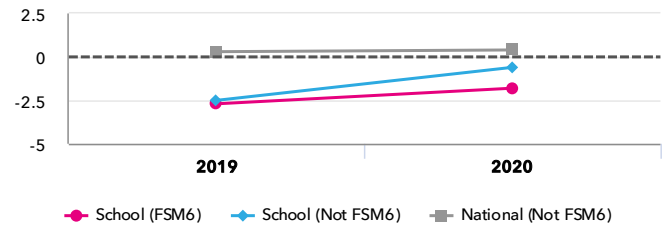
## KS2 attainment for disadvantaged pupils 2020

Average Scaled Score (Re, Ma)



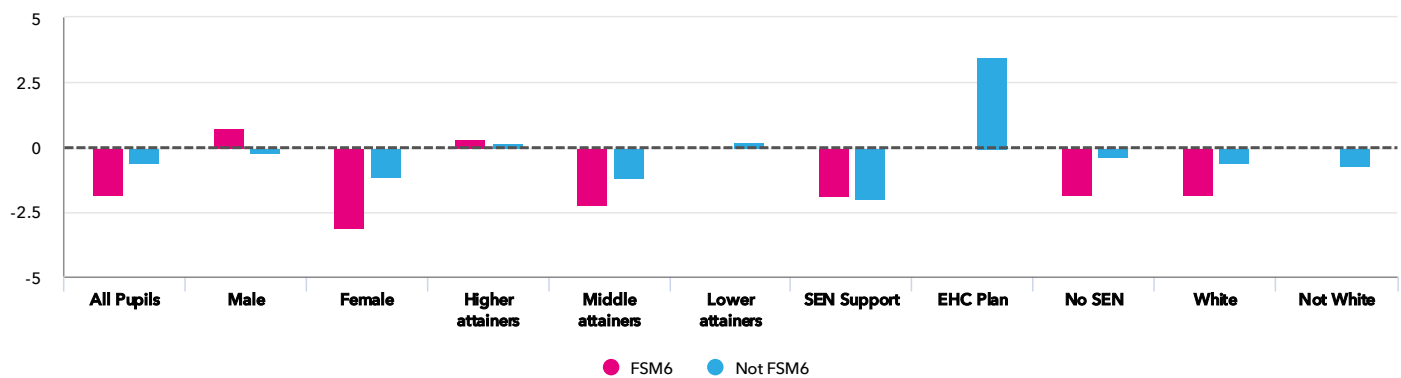
## KS2 progress for disadvantaged pupils 2020

Average Scaled Score (Re, Ma)



## Progress gap

Average Scaled Score (Re, Ma)



## Attainment & progress

Pupils				Attainment			Progress		
				Average Scaled Score (Re, Ma)			Average Scaled Score (Re, Ma)		
		FSM6	Not FSM6	FSM6	Not FSM6	Gap	FSM6	Not FSM6	Gap
<b>Summary</b>	All Pupils	6	39	106.3	107	-0.7	-1.8	-0.6	-1.2
<b>Gender</b>	Male	2	17	109.5	107.7	1.8	0.7	-0.1	0.8
	Female	4	22	104.6	106.4	-1.8	-3.1	-1.1	-2
<b>FFT Prior Attainment</b>	Higher attainers	1	11	113.5	113	0.5	0.3	+0.0	0.3
	Middle attainers	5	21	104.8	106.3	-1.5	-2.2	-1.2	-1
	Lower attainers	-	6	-	98.6	-	-	0.2	-
<b>SEN Group</b>	SEN Support	2	8	103.8	98.4	5.4	-1.9	-2	0.1
	EHC Plan	-	1	-	113.5	-	-	3.5	-
	No SEN	4	30	107.5	109	-1.5	-1.8	-0.4	-1.4
<b>Ethnic Group</b>	White	6	29	106.3	106.9	-0.6	-1.8	-0.6	-1.2
	Not White	-	10	-	107.2	-	-	-0.7	-

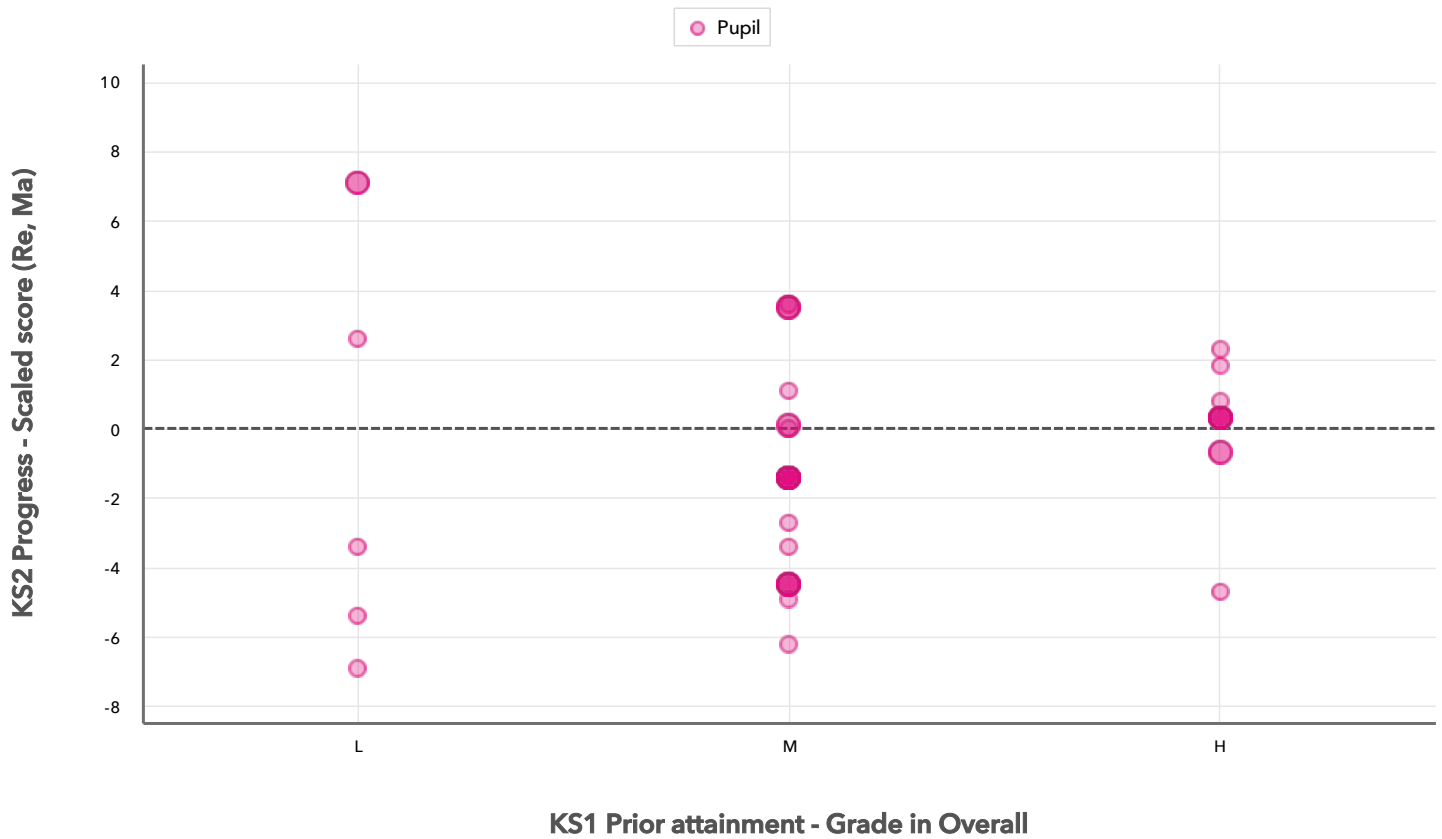
2020 self-evaluation reports have been calculated using the teacher assessments provided by schools as part of the FFT Results Service. ?

College Town Primary School

2020 KS2

## Scatterplot

KS2 Pupil scatterplot 2020 45 pupils highlighted by All pupils ▼



Context data has been produced using either the data supplied by schools as part of the FFT 2020 Results Service or from the latest census data provided by the DfE. [?](#)

## College Town Primary School

2020

KS2

## Context

## Context · Year 6

		Pupils	Comparative profile 2019 / 2020		Absence during Key Stage 2		Persistent absence during Key Stage 2	
		School	School	National	School	National	School	National
<b>Summary</b>	All Pupils	45	100%	100%	-	-	-	-
<b>Gender</b>	Male	19	42%	51%	-	-	-	-
	Female	26	58%	49%	-	-	-	-
<b>FFT Prior Attainment</b>	Higher attainers	12	27%	15%	-	-	-	-
	Middle attainers	26	58%	61%	-	-	-	-
	Lower attainers	6	13%	19%	-	-	-	-
<b>Pupil Premium</b>	FSM (in last 6 years)	6	13%	30%	-	-	-	-
	Not FSM (in last 6 years)	39	87%	70%	-	-	-	-
<b>FSM</b>	FSM	5	11%	21%	-	-	-	-
	Not FSM	40	89%	78%	-	-	-	-
<b>FSM Ever</b>	FSM (ever)	7	16%	30%	-	-	-	-
	Not FSM (ever)	38	84%	69%	-	-	-	-
<b>Term of Birth</b>	Autumn Term	12	27%	34%	-	-	-	-
	Spring Term	15	33%	32%	-	-	-	-
	Summer Term	18	40%	34%	-	-	-	-
<b>SEN Group</b>	SEN Support	10	22%	15%	-	-	-	-
	EHC Plan	1	2%	2%	-	-	-	-
	No SEN	34	76%	82%	-	-	-	-
<b>EAL</b>	First language not English	5	11%	25%	-	-	-	-
	First language English	38	84%	74%	-	-	-	-
<b>Mobility</b>	Joined in Y5 or Y6	2	4%	7%	-	-	-	-
	Joined before Y5	43	96%	93%	-	-	-	-
<b>Ethnicity</b>	White	35	78%	69%	-	-	-	-
	Black Caribbean	1	2%	3%	-	-	-	-
	Black African	1	2%	6%	-	-	-	-
	Indian	1	2%	3%	-	-	-	-
	Other Asian	4	9%	3%	-	-	-	-
	Any Other	1	2%	4%	-	-	-	-
	Unknown	2	4%	2%	-	-	-	-