

# Self-evaluation Summary Dashboard

Produce custom dashboards  
at [fftaspire.org](https://fftaspire.org)

## College Town Primary School

LA Bracknell Forest DfE 8672087 Produced September 2020

### Reports

- Overview
- Attainment & Progress
- Pupil groups
- Subjects
- Disadvantaged pupils
- Scatterplot
- Context

### What it tells you

- What are the strengths and weaknesses of your school?
- How does attainment and pupil progress at your school compare to the national average?
- How are you performing in different subjects?
- Do you have any under-performing groups of pupils?

### About the data shown



#### Filters

No filters chosen (all pupils included)

You can use filters to view a subset of pupils



#### Indicators

% Expected Standard + (Re, Wr, Ma)

% Higher Standard (Re, Wr, Ma)

2020 self-evaluation reports have been calculated using the teacher assessments provided by schools as part of the FFT Results Service. ?

College Town Primary School

2020 KS1

## Overview

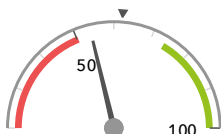
### KS1 Attainment 2020 · Actual results

69 pupils

% Expected Standard + (Re, Wr, Ma)

% Higher Standard (Re, Wr, Ma)

54%



In line with the national average (62%) ◀

0% -



Significantly below the national average (10%) ◀

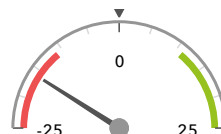
### KS1 Progress 2020 · Value Added

64 matched pupils

% Expected Standard + (Re, Wr, Ma)

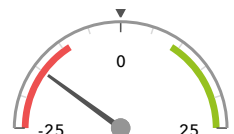
% Higher Standard (Re, Wr, Ma)

-16% -



Significantly below the national average (0%) ◀

-15% -



Significantly below the national average (0%) ◀

### KS1 higher and lower performing pupil groups 2020

Minimum group size: 5

	Higher performing	Lower performing
<b>Overall achievement</b> pupil progress	Lower attainers (12) ↑	Higher attainers (26) - ↓ Autumn Term (24) - ↓ White (50) - ↓
<b>KS1 reading achievement</b> pupil progress	Lower attainers (12)	Higher attainers (26) Autumn Term (24) Male (31)
<b>KS1 writing achievement</b> pupil progress	Lower attainers (12) SEN Support (6)	Higher attainers (26) Autumn Term (24) First language English (52)
<b>KS1 mathematics achievement</b> pupil progress		Higher attainers (26) Spring Term (19) Autumn Term (24)

2020 self-evaluation reports have been calculated using the teacher assessments provided by schools as part of the FFT Results Service. ?

College Town Primary School

2020 KS1

## Attainment & progress

### KS1 Attainment 2020

69 pupils

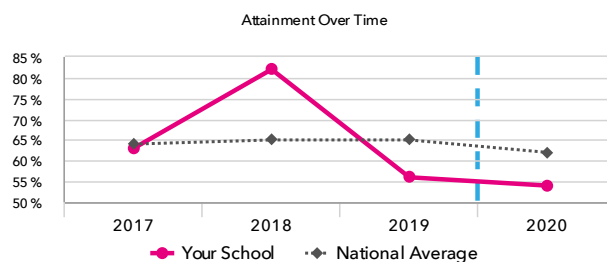
% Expected Standard + (Re, Wr, Ma)

54%

FFT Rank



In line with the national average (62%)



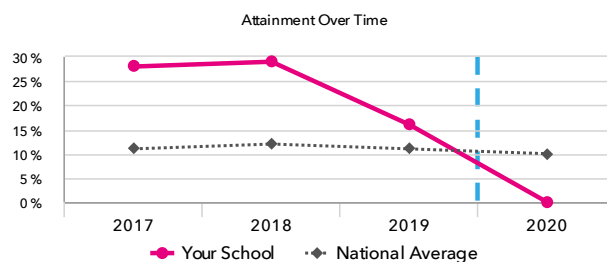
% Higher Standard (Re, Wr, Ma)

0% -

FFT Rank



Significantly below the national average (10%)



### KS1 Progress 2020

64 matched pupils

% Expected Standard + (Re, Wr, Ma)

-16% -

FFT Rank



Significantly below the national average (0%)

% Higher Standard (Re, Wr, Ma)

-15% -

FFT Rank



Significantly below the national average (0%)

### KS1 performance summary

	Actual results			Pupil progress		
	2018	2019	2020	2018	2019	2020
Number of Pupils / % Matched	76	68	69	96%	91%	93%
% Expected Standard + (Re, Wr, Ma)	82% +↑	56% ↓	54%	+5%	-17% -↓	-16% -
% Higher Standard (Re, Wr, Ma)	29% +	16%	0% -	+7%	+1%	-15% -
% Expected Standard + Reading	91% +↑	78% ↓	64%	+5% ↑	-6%	-15% -
% Higher Standard Reading	47% +	38% +	0% -	+8%	+7%	-29% -
% Expected Standard + Writing	82% +↑	60% ↓	67%	+1%	-16% -↓	-7%
% Higher Standard Writing	33% +	18% ↓	0% -	+5%	-1%	-19% -
% Expected Standard + Maths	88% +↑	71% ↓	58% -	+4% ↑	-14% -↓	-21% -
% Higher Standard Maths	41% +	22% ↓	1% -↓	+6%	-6%	-25% -↓

2020 self-evaluation reports have been calculated using the teacher assessments provided by schools as part of the FFT Results Service. ?

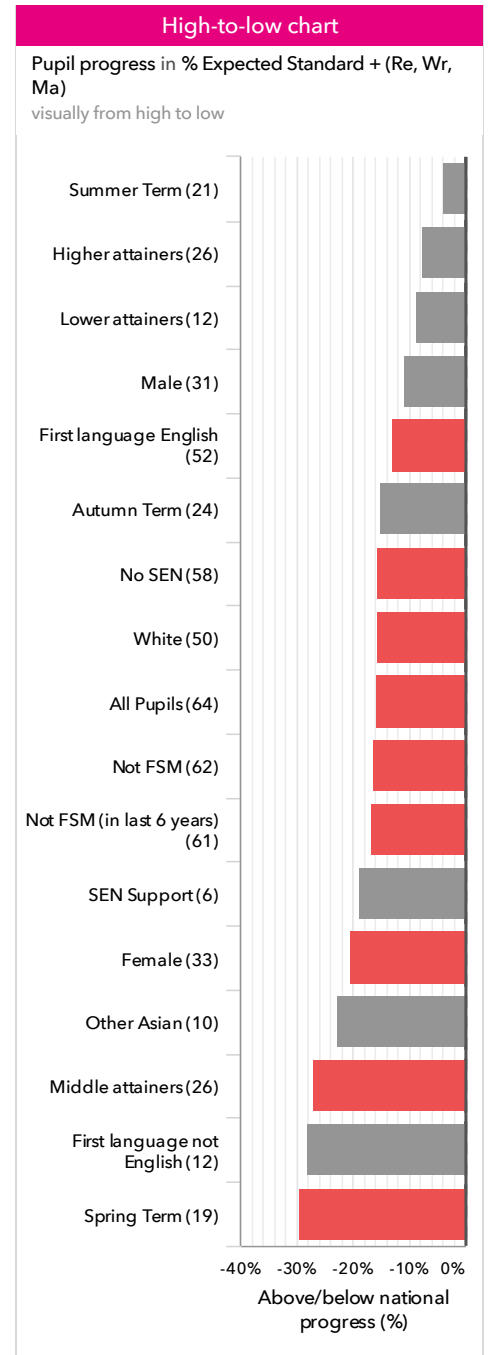
## College Town Primary School

2020 KS1

# Pupil groups

## KS1 Pupil groups performance 2020

			Actual results		Pupil progress	
	Pupils		% Expected Standard + (Re, Wr, Ma)	% Higher Standard (Re, Wr, Ma)	% Expected Standard + (Re, Wr, Ma)	% Higher Standard (Re, Wr, Ma)
<b>Summary</b>	All Pupils	69	54%	0% <span>⬇</span>	-16% <span>⬇</span>	-15% <span>⬇</span>
<b>Gender</b>	Male	34	59%	0%	-11%	-15% <span>⬇</span>
	Female	35	49% <span>⬇</span>	0% <span>⬇</span>	-20% <span>⬇</span>	-15% <span>⬇</span>
<b>Prior Attainment</b>	Higher attainers	26	85%	0% <span>⬇</span>	-8%	-32% <span>⬇</span>
	Middle attainers	26	46% <span>⬇</span>	0%	-27% <span>⬇</span>	-4%
	Lower attainers	12	25%	0%	-9%	-1%
<b>Pupil Premium</b>	FSM (in last 6 years)	3	67%	0%	+4%	-9%
	Not FSM (in last 6 years)	66	53% <span>⬇</span>	0% <span>⬇</span>	-17% <span>⬇</span>	-15% <span>⬇</span>
<b>FSM</b>	FSM	2	50%	0%	-0%	-8%
	Not FSM	67	54% <span>⬇</span>	0% <span>⬇</span>	-16% <span>⬇</span>	-15% <span>⬇</span>
<b>Term of Birth</b>	Summer Term	23	61% <span>⬆</span>	0%	-4%	-12%
	Spring Term	22	32% <span>⬇</span>	0%	-29% <span>⬇</span>	-10%
	Autumn Term	24	67%	0% <span>⬇</span>	-15%	-21% <span>⬇</span>
<b>SEN Group</b>	SEN Support	7	14%	0%	-19%	-4%
	No SEN	62	58%	0% <span>⬇</span>	-15% <span>⬇</span>	-16% <span>⬇</span>
<b>EAL</b>	First language not English	13	31%	0%	-28%	-3%
	First language English	56	59%	0% <span>⬇</span>	-13% <span>⬇</span>	-18% <span>⬇</span>
<b>Ethnicity</b>	White	53	57%	0% <span>⬇</span>	-15% <span>⬇</span>	-17% <span>⬇</span>
	Black African	1	100%	0%	+9%	-19%
	Indian	1	100%	0%	+40%	-2%
	Other Asian	11	36%	0%	-23%	-7%
	Any Other	3	33%	0%	-28%	-5%



2020 self-evaluation reports have been calculated using the teacher assessments provided by schools as part of the FFT Results Service. ?

## College Town Primary School

2020 KS1

# Subjects

## KS1 subject performance 2020

	Actual results			Pupil progress			Actual results over time												
	2018	2019	2020	2018	2019	2020													
Number of Pupils / % Matched	76	68	69	96%	91%	93%													
<b>Reading</b>																			
% Expected Standard +	91% <span>⬆️</span>	78% <span>⬇️</span>	64% <span>⬇️</span>	+5% <span>⬆️</span>	-6% <span>⬇️</span>	-15% <span>⬇️</span>	<div><p>% Expected Standard + Reading</p><table><thead><tr><th>Year</th><th>Your School</th><th>National Average</th></tr></thead><tbody><tr><td>2018</td><td>91%</td><td>75%</td></tr><tr><td>2019</td><td>78%</td><td>75%</td></tr><tr><td>2020</td><td>64%</td><td>72%</td></tr></tbody></table></div>	Year	Your School	National Average	2018	91%	75%	2019	78%	75%	2020	64%	72%
Year	Your School	National Average																	
2018	91%	75%																	
2019	78%	75%																	
2020	64%	72%																	
% Higher Standard	47% <span>⬆️</span>	38% <span>⬆️</span>	0% <span>⬇️</span>	+8% <span>⬆️</span>	+7% <span>⬆️</span>	-29% <span>⬇️</span>													
<b>Writing</b>																			
% Expected Standard +	82% <span>⬆️</span>	60% <span>⬇️</span>	67% <span>⬆️</span>	+1% <span>⬆️</span>	-16% <span>⬇️</span>	-7% <span>⬇️</span>	<div><p>% Expected Standard + Writing</p><table><thead><tr><th>Year</th><th>Your School</th><th>National Average</th></tr></thead><tbody><tr><td>2018</td><td>82%</td><td>70%</td></tr><tr><td>2019</td><td>60%</td><td>70%</td></tr><tr><td>2020</td><td>67%</td><td>68%</td></tr></tbody></table></div>	Year	Your School	National Average	2018	82%	70%	2019	60%	70%	2020	67%	68%
Year	Your School	National Average																	
2018	82%	70%																	
2019	60%	70%																	
2020	67%	68%																	
% Higher Standard	33% <span>⬆️</span>	18% <span>⬇️</span>	0% <span>⬇️</span>	+5% <span>⬆️</span>	-1% <span>⬆️</span>	-19% <span>⬇️</span>													
<b>Maths</b>																			
% Expected Standard +	88% <span>⬆️</span>	71% <span>⬇️</span>	58% <span>⬇️</span>	+4% <span>⬆️</span>	-14% <span>⬇️</span>	-21% <span>⬇️</span>	<div><p>% Expected Standard + Maths</p><table><thead><tr><th>Year</th><th>Your School</th><th>National Average</th></tr></thead><tbody><tr><td>2018</td><td>88%</td><td>75%</td></tr><tr><td>2019</td><td>71%</td><td>75%</td></tr><tr><td>2020</td><td>58%</td><td>72%</td></tr></tbody></table></div>	Year	Your School	National Average	2018	88%	75%	2019	71%	75%	2020	58%	72%
Year	Your School	National Average																	
2018	88%	75%																	
2019	71%	75%																	
2020	58%	72%																	
% Higher Standard	41% <span>⬆️</span>	22% <span>⬇️</span>	1% <span>⬇️</span>	+6% <span>⬆️</span>	-6% <span>⬆️</span>	-25% <span>⬇️</span>													
<b>Science</b>																			
% Expected Standard +	99% <span>⬆️</span>	88%	-	-	-	-	<div><p>% Expected Standard + Science</p><table><thead><tr><th>Year</th><th>Your School</th><th>National Average</th></tr></thead><tbody><tr><td>2018</td><td>99%</td><td>83%</td></tr><tr><td>2019</td><td>88%</td><td>82%</td></tr><tr><td>2020</td><td>-</td><td>-</td></tr></tbody></table></div>	Year	Your School	National Average	2018	99%	83%	2019	88%	82%	2020	-	-
Year	Your School	National Average																	
2018	99%	83%																	
2019	88%	82%																	
2020	-	-																	

2020 self-evaluation reports have been calculated using the teacher assessments provided by schools as part of the FFT Results Service. ?

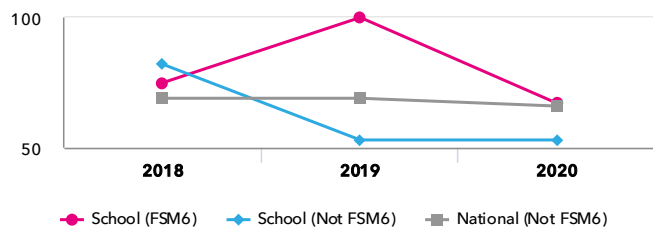
## College Town Primary School

2020 KS1

# Disadvantaged pupils

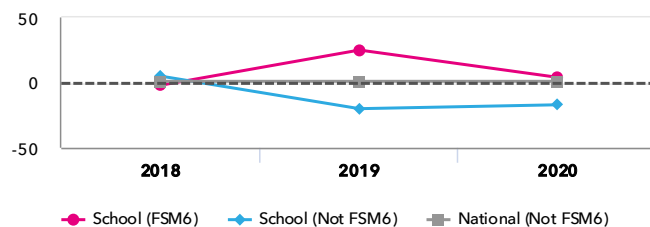
### KS1 attainment for disadvantaged pupils 2020

% Expected Standard + (Re, Wr, Ma)



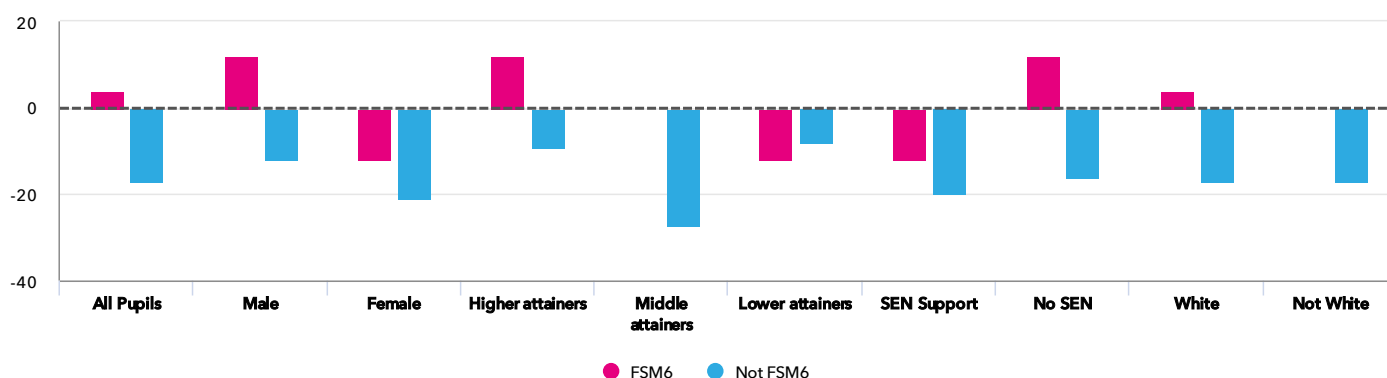
### KS1 progress for disadvantaged pupils 2020

% Expected Standard + (Re, Wr, Ma)



### Progress gap

% Expected Standard + (Re, Wr, Ma)



### Attainment & progress

Pupils				Attainment			Progress		
				% Expected Standard + (Re, Wr, Ma)			% Expected Standard + (Re, Wr, Ma)		
		FSM6	Not FSM6	FSM6	Not FSM6	Gap	FSM6	Not FSM6	Gap
<b>Summary</b>	All Pupils	3	66	67%	53% <span>⬇️</span>	14%	4%	-17% <span>⬇️</span>	21%
<b>Gender</b>	Male	2	32	100%	56%	44%	12%	-12%	24%
	Female	1	34	0%	50%	-50%	-12%	-21%	9%
<b>Prior Attainment</b>	Higher attainers	2	24	100%	83%	17%	12%	-9%	21%
	Middle attainers	-	26	-	46%	-	-	-27%	-
	Lower attainers	1	11	0%	27%	-27%	-12%	-8%	-4%
<b>SEN Group</b>	SEN Support	1	6	0%	17%	-17%	-12%	-20%	8%
	No SEN	2	60	100%	57%	43%	12%	-16%	28%
<b>Ethnic Group</b>	White	3	50	67%	56%	11%	4%	-17%	21%
	Not White	-	16	-	44%	-	-	-17%	-

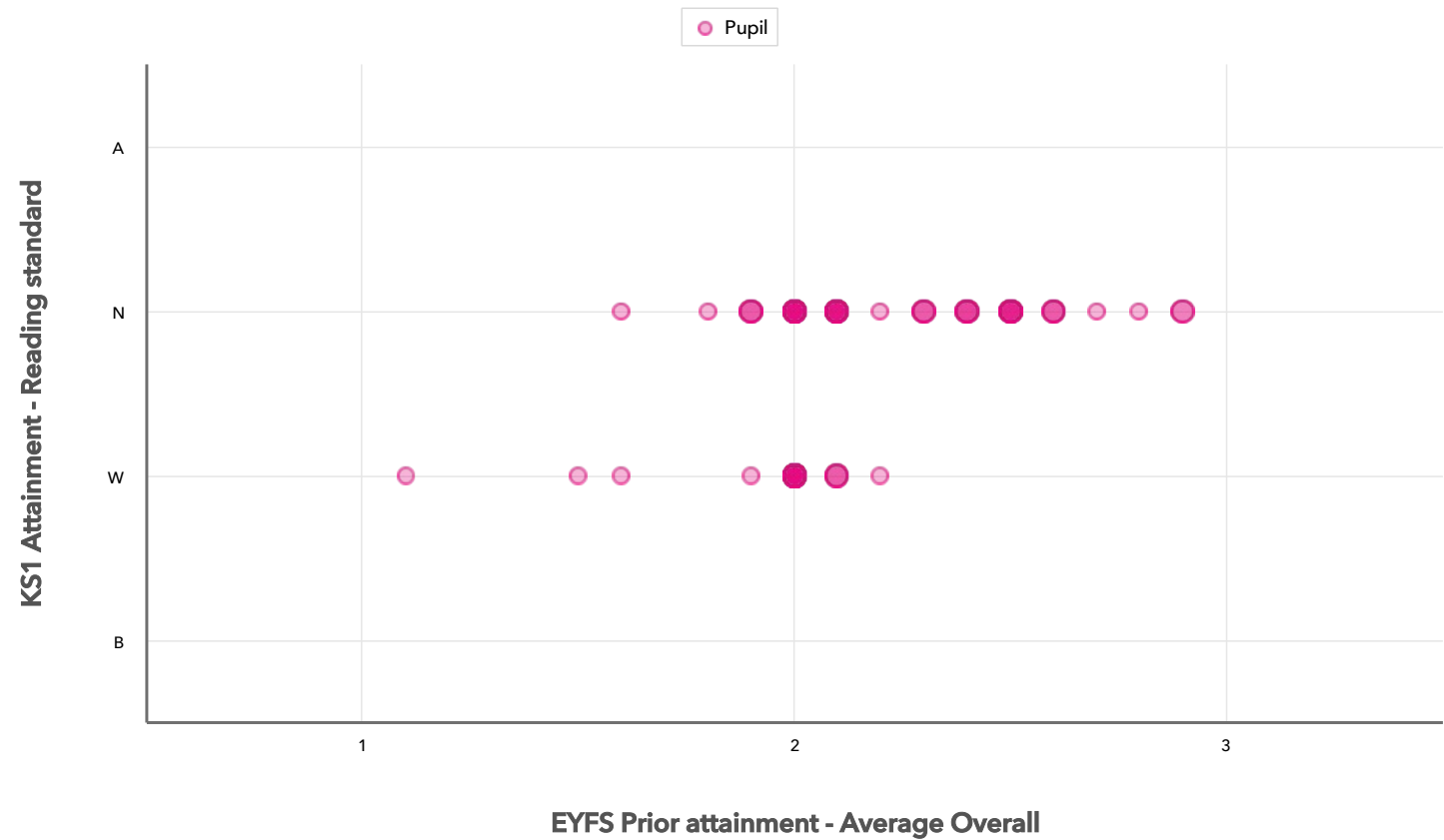
2020 self-evaluation reports have been calculated using the teacher assessments provided by schools as part of the FFT Results Service. ?

College Town Primary School

2020 KS1

Scatterplot

KS1 Pupil scatterplot 2020 69 pupils highlighted by All pupils ▾



Context data has been produced using either the data supplied by schools as part of the FFT 2020 Results Service or from the latest census data provided by the DfE. [?](#)

College Town Primary School

2020

KS1

## Context

### Context · Year 2

		Pupils	Comparative profile 2019 / 2020		Absence during Key Stage 1		Persistent absence during Key Stage 1	
		School	School	National	School	National	School	National
<b>Summary</b>	All Pupils	69	100%	100%	-	-	-	-
<b>Gender</b>	Male	34	49%	51%	-	-	-	-
	Female	35	51%	49%	-	-	-	-
<b>Prior Attainment</b>	Higher attainers	26	38%	33%	-	-	-	-
	Middle attainers	26	38%	35%	-	-	-	-
	Lower attainers	12	17%	28%	-	-	-	-
<b>Pupil Premium</b>	FSM (in last 6 years)	3	4%	24%	-	-	-	-
	Not FSM (in last 6 years)	66	96%	76%	-	-	-	-
<b>FSM</b>	FSM	2	3%	22%	-	-	-	-
	Not FSM	67	97%	77%	-	-	-	-
<b>Term of Birth</b>	Summer Term	23	33%	34%	-	-	-	-
	Spring Term	22	32%	32%	-	-	-	-
	Autumn Term	24	35%	34%	-	-	-	-
<b>SEN Group</b>	SEN Support	7	10%	13%	-	-	-	-
	No SEN	62	90%	85%	-	-	-	-
<b>EAL</b>	First language not English	13	19%	25%	-	-	-	-
	First language English	56	81%	74%	-	-	-	-
<b>Ethnicity</b>	White	53	77%	67%	-	-	-	-
	Black African	1	1%	6%	-	-	-	-
	Indian	1	1%	3%	-	-	-	-
	Other Asian	11	16%	4%	-	-	-	-
	Any Other	3	4%	5%	-	-	-	-