

Chairs' Briefing Meeting

Thursday 20th June 2019

Easthampstead Park Conference Centre



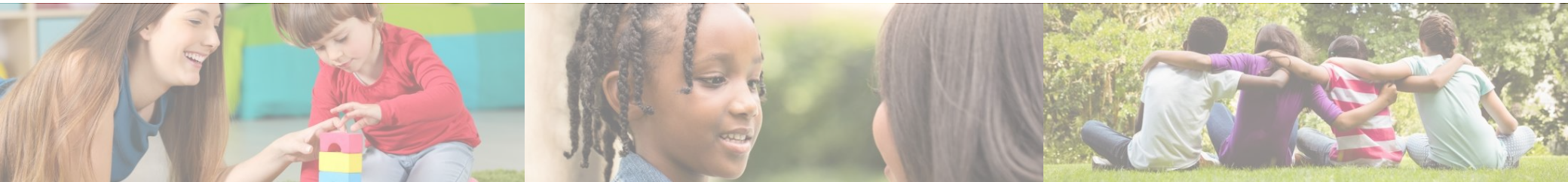
AGENDA

- Welcome and overview introduction – Rachel Morgan, Assistant Director, Education and Learning
- Improving the experience and outcomes of Pupil Premium (double disadvantaged) children Task & Finish Group – Councillor Dee Hamilton & Councillor Gill Birch
- BFC Financial Consultation – Paul Clark. Finance Business Partner
- Networking, reflection and review of the year - Rachel Morgan, Assistant Director, Education and Learning
- The Education Inspection Framework – Sharon Jones, Head of Standards, Education & Learning
- Governor Training update – Rachel Clayton, Governor Services Officer
- Summary and close – Councillor Gareth Barnard, Executive Member CYPL

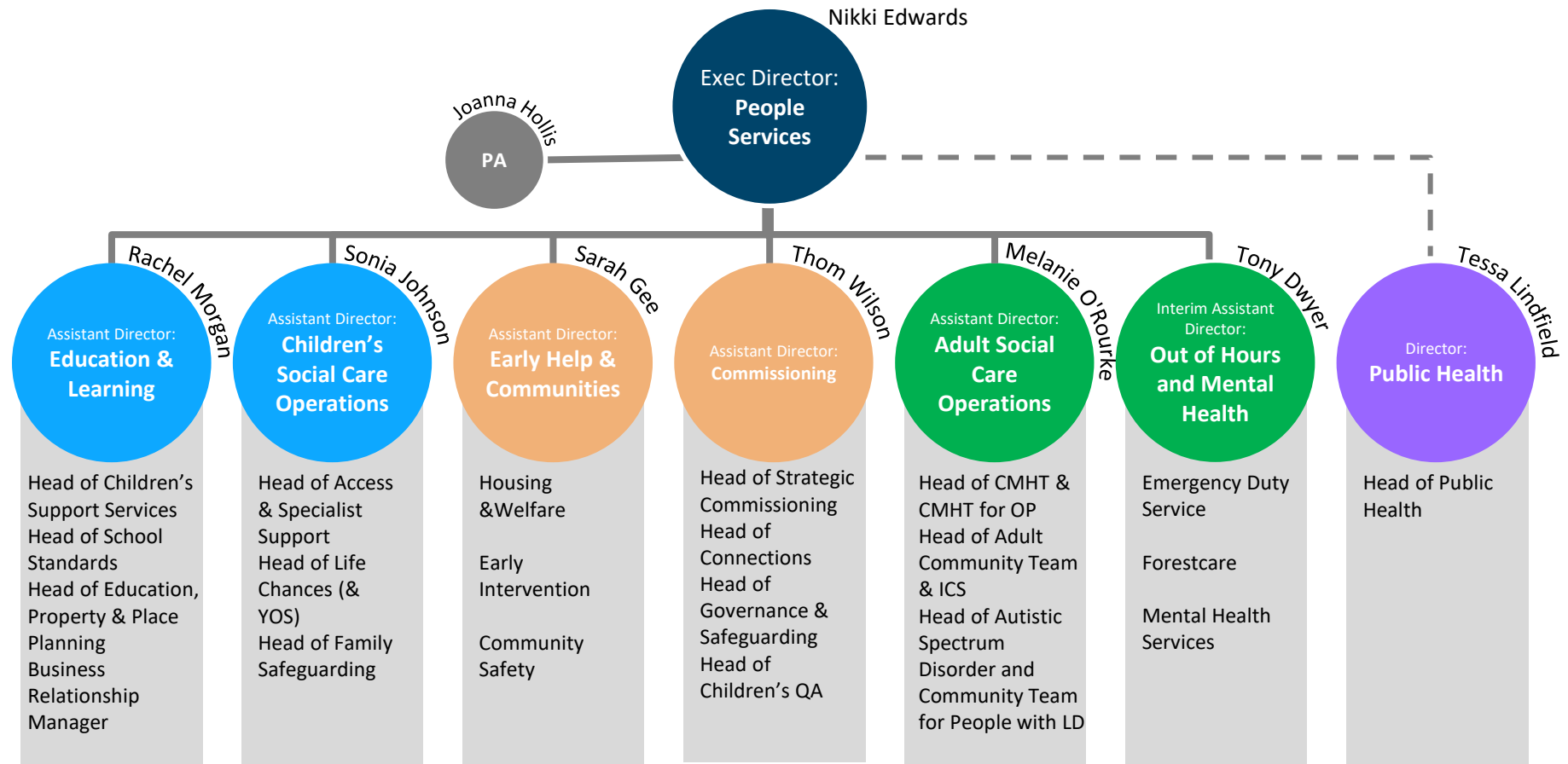


People Directorate

Who is who?



Our Leadership and Governance

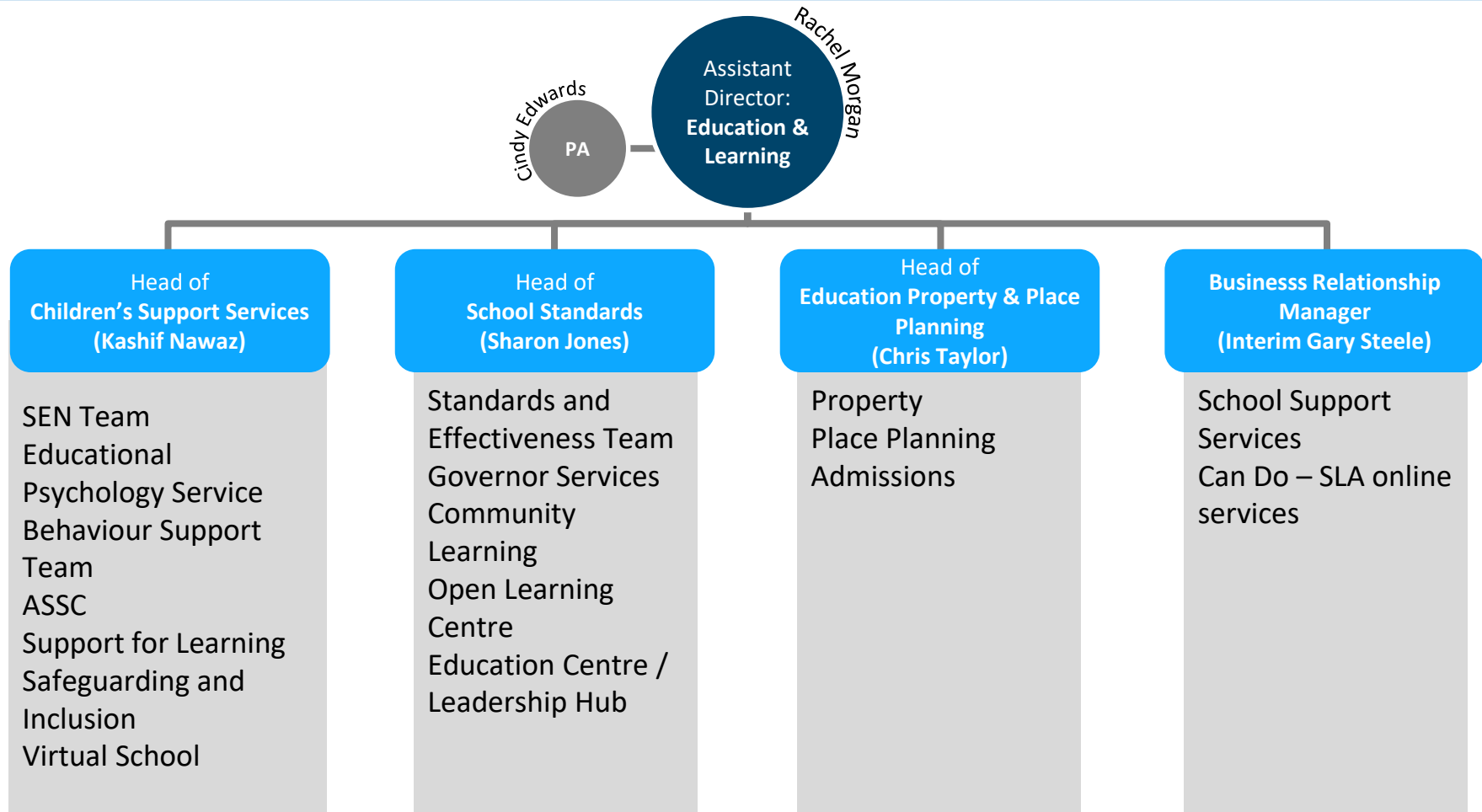


Education and Learning

Who is who?



Education & Learning



Networking, reflection and review of the year...

School Update

- 10 school inspections and 1 HMI RI visit – all positive
 - 5 schools increased by a grade –
 - 4 RI to Good (Fox Hill, Winkfield St Marys, Garth and The Brakenhale)
 - 1 Good to Outstanding (Cranbourne)
 - HSJ remained RI but leadership good and behaviour
 - College Hall and Kennel Lane remain good
 - St Michael's Sandhurst and Wooden Hill remain good.
-
- Holly Spring and Ascot Heath both becoming primary schools in September 2019
 - 5 new Headteachers starting in September 2019

Learning Improvement Strategy



Unlocking Opportunities
for all Children

Impact of Learning Improvement Strategy

Learning Improvement Strategy – unlocking opportunities for all children

Leaders including governors in schools and LA officers acknowledge the need to further raise the expectation through improving the following priorities:

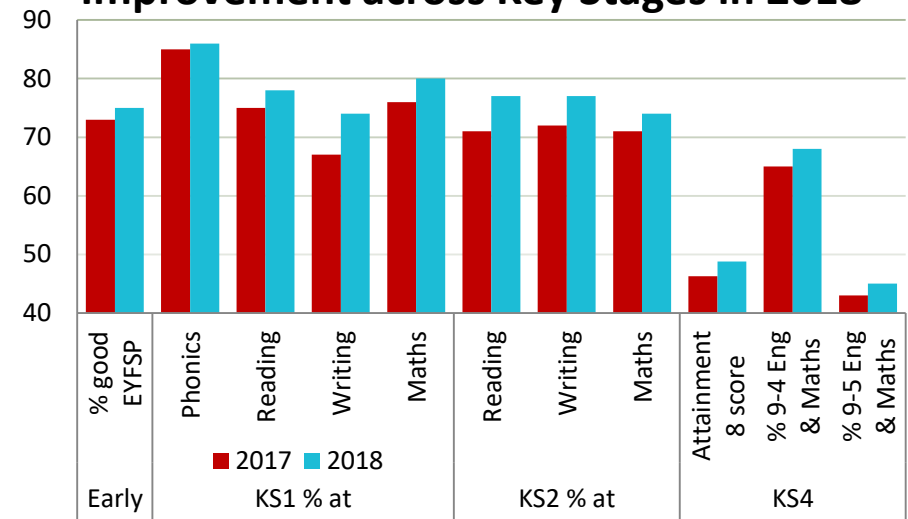
1. Diminishing the difference for disadvantaged pupils
2. Ensuring more pupils attend good or better schools
3. Raising outcomes at all stages so that they are above the national average for all pupils

80%
schools
Good or
Better

10 of 10
positive
inspections in
2018/19

+1
school
outstanding
from good

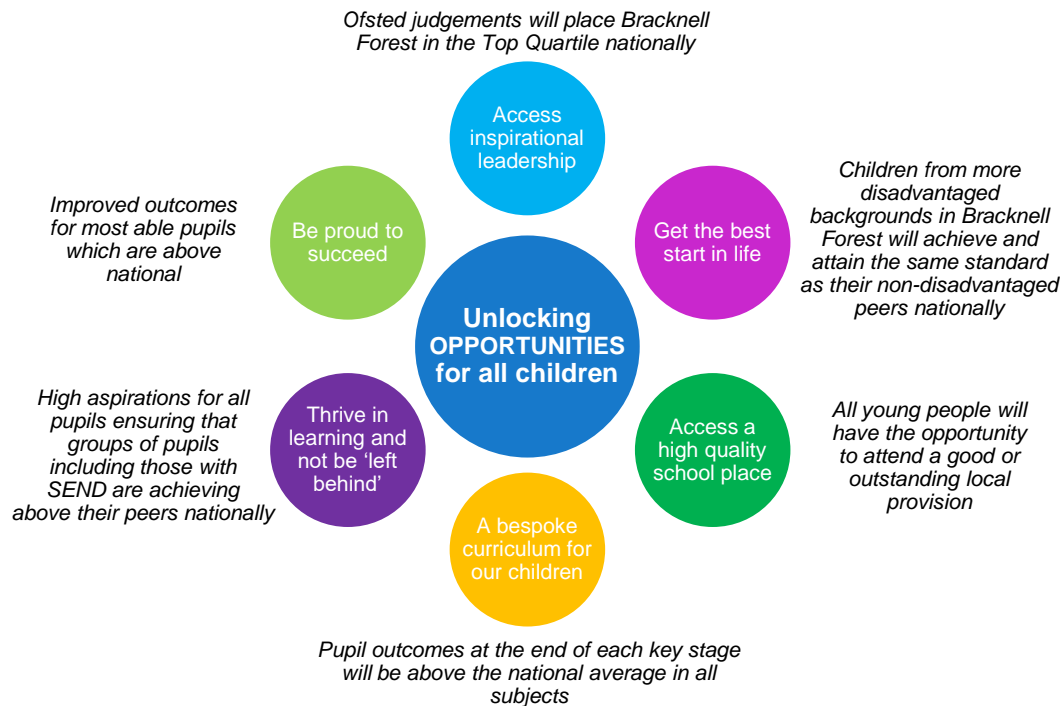
Improvement across Key Stages in 2018



Strategic Direction

Learning Improvement Strategy: Unlocking opportunities for all children

Key Priorities 2017-19



The focus of the strategy is ensuring every child is at the centre of what we do and that we as professionals unlock opportunities for all children in Bracknell Forest.

This strategy has been co-produced in partnerships with school leaders including governors and LA officers within Bracknell Forest. Roles and responsibilities have been agreed and tightly focused on the key areas which will ensure, by working together, we unlock the opportunities for the children and young people in Bracknell Forest.

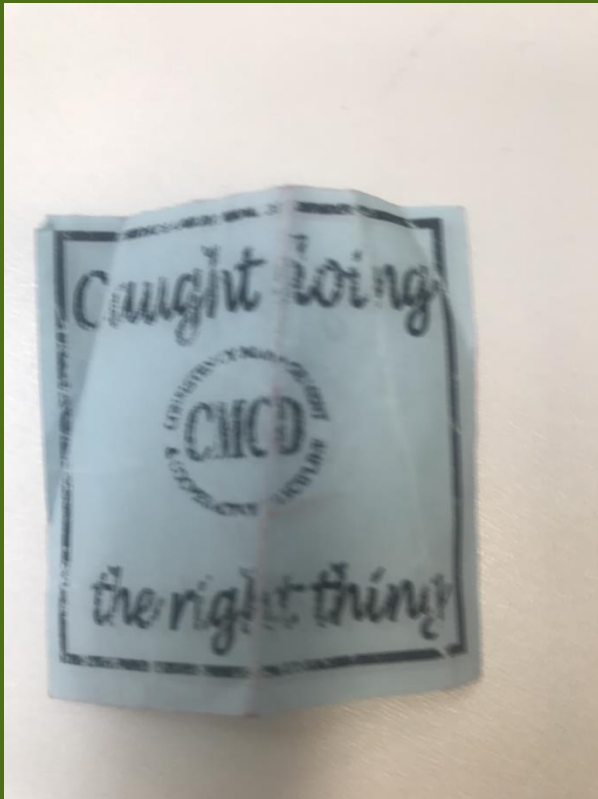
Improving the experience and outcomes of Pupil Premium (double disadvantaged) children

Cllr Gill Birch – Chairman: Children, Young People and Learning Overview and Scrutiny Panel

Cllr Dee Hamilton, Chairman: Improving the experience and outcomes of Pupil Premium (double disadvantaged) children Task and Finish Group



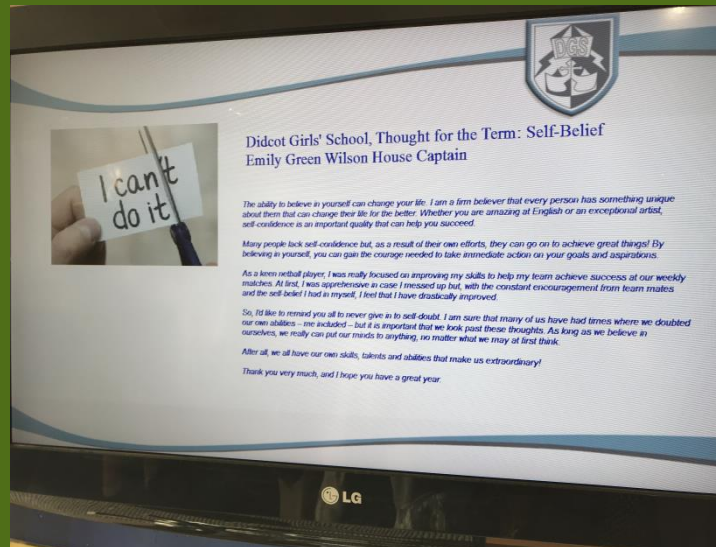
Why did we set up the Task and Finish Group?



Rachel Morgan and Zoe Livingstone attended the Children, Young People and Learning Overview & Scrutiny Panel in June 2018 and we found:

- Double disadvantaged children achieving the combined Expected Standard was below the national average
- 15% of children SEND achieved the combined Expected Standard in comparison to only 11% of double disadvantaged children

School visits



Survey



Recommendations

- 12 recommendations in total, those specific to governors include:
 - Development of a Pupil Premium Toolkit for governors
 - Better information for governors
 - Appointing a senior member of the Leadership Team as the pupil premium lead in a school
 - All governing bodies should appoint a Pupil Premium governor

Thank you!

Any questions?



CHAIRS' BRIEFING: FINANCIAL CONSULTATION WITH SCHOOLS ON THE 2020-21 BUDGET

20 June 2019

**Paul Clark
Finance Business Partner - CYPL**



Financial Consultation: 2020-21 Budget

National Perspective

- No significant changes expected from DfE on the national funding framework
- It's still work in progress as more money is required to fully implement to new School National Funding Formula (SNFF).
- BF Schools Budget received a 5% increase in per pupil funding over the last 2 years following numerous cash flat settlements
- Further progress in 2020-21 towards all LAs receiving enough funds to pay SNFF rates to their schools is unknown as there is a delay from the DfE to the announcement of the financial settlement

Financial Consultation: 2020-21 Budget

BF matters

- Key objective in allocating funds to schools remains a close match to the SNFF allocation
- The limited time available from receiving DfE budget information to confirming budget decisions requires changes to current processes
- 3 alternative arrangements commonly in place in other LAs have been identified that schools are asked to identify their preferred approach
- In respect of meeting the extra cost arising from new schools, views are being sought on whether all schools should make an equal proportionate contribution or whether the lowest funded schools should continue to receive their full budget

Financial Consultation: 2020-21 Budget

BF matters

- Annual questions being asked from maintained schools to continue to deduct funds from delegated budgets in respect of:
 - ‘de-delegated’ services
 - a contribution to LA education related statutory and regulatory duties
- Views are also being sought on the future funding arrangements for the ‘de-delegated’ maternity leave scheme where costs are currently exceeding funding.
 - 3 options are presented for schools to indicate their preference.

Networking – Reflection Activity

Thinking about your successes as a school this year write down 3 and then share on your table.

Thinking about your development areas write down 2 and then share on your table.

Support required re your development areas – how will you gain this other schools, governors, LA or other source?

How can we ensure that children / young people in Bracknell receive the best quality education?

The Education Inspection Framework



The Education Inspection Framework

https://assets.publishing.service.gov.uk/government/uploads/system/uploads/attachment_data/file/801429/Education_inspection_framework.pdf

Handbook

https://assets.publishing.service.gov.uk/government/uploads/system/uploads/attachment_data/file/806942/School_inspection_handbook_section_5_060619.pdf



Amanda Spielman – Chief Inspector

Introducing the new Education Inspection Framework.

<https://www.youtube.com/watch?v=byaUliCMi9E>



Inspection Judgements



Judgement areas: evolution, not revolution

Overall effectiveness

Teaching, learning and assessment

Outcomes

Personal development, behaviour and welfare

Leadership and management

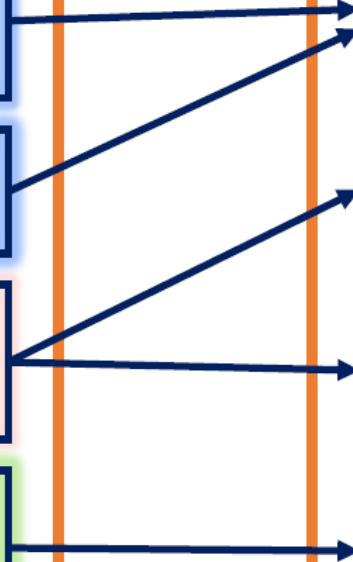
Overall effectiveness

Quality of education

Behaviour and attitudes

Personal development

Leadership and management



The quality of education



A new 'quality of education' judgement

Quality of education

Intent

- Curriculum design, coverage and appropriateness

Implementation

- Curriculum delivery
- Teaching (pedagogy) – contribution to delivering the curriculum as intended
- Assessment (formative and summative)

Impact

- Attainment and progress (including national tests and assessments)
- Reading
- Destinations

3 key questions for school leaders

- What are you trying to achieve through your curriculum? (**Intent**)
- How is your curriculum being delivered? (**Implementation**)
- What difference is your curriculum making? (**Impact**)

Leadership and management

Governance



Inspectors will...

- seek evidence of the impact of those responsible for governance.
- explore how governors carry out each of their core functions and how this supports the school to provide high quality education for its pupils.
- ensure statutory duties are being fulfilled eg Equality Act 2010, prevent duty and safeguarding.
- report clearly on governance in the inspection report.



A continued sharp focus on safeguarding

Our inspection of safeguarding will continue to be built around three core areas.

- **Identify:** how do leaders and other staff identify learners who may need early help or who are at risk of abuse?
- **Help:** what timely action do staff take to ensure that learners get the right support when they need it, including preventative work, and how well do they work with other agencies?
- **Manage:** how do responsible bodies and staff manage their statutory responsibilities and, in particular, how do they manage safe recruitment and respond to allegations about staff/other adults?

Inspectors will continue to judge whether safeguarding is effective or ineffective.

Summary & Key Questions

Consider.....

- **Clarity of vision, ethos and strategic direction**
- **Curriculum at the heart of inspection**

What does your school want children to know and be able to do?

Is it clear, coherent and well sequenced?

Are outcomes the result of a well-taught curriculum which is broad and balanced?

- **SEND-** Does the curriculum meet the needs of all children?
- **Exclusions**
- **Safeguarding**
- **Previous areas for development from Ofsted**
- **SEF** – Is this accurate and based upon evidence?
- **SDP** – What are the priorities and so what?
- **LA/STEP Reports-** School action and impact?

DATES FOR YOUR DIARIES

1. NGA Leading Governance – Development for Chairs Programme
2. The Professional Clerk – Development for Clerks
3. Chair and Headteacher Working Together – Tuesday 15th October 2019
4. Chairs' Briefing – Thursday 7th November 2019
5. Governor Development Conference – Friday 6th March 2020

“Ensuring Quality – Pursuit for Happiness”



THANK YOU

